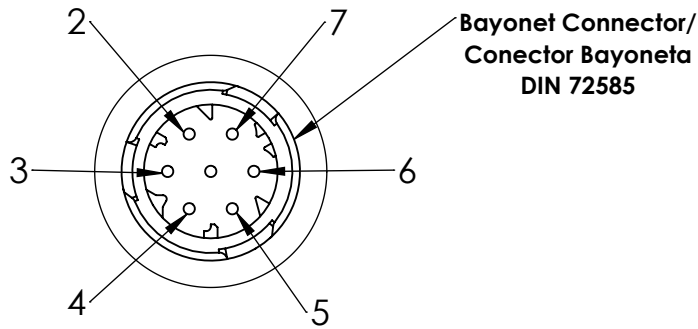


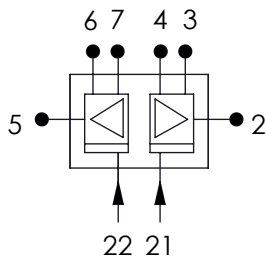
**Technical Sheet / Datos técnicos:**

Part adaptable to / Referencia adaptable a:	K093833K50
Admissible overpressure / Presión máxima:	16 bar
Measuring range / Rango de medida:	0 - 16 bar
Operating temperature range / Rango de temperatura:	- 40°C a / to +80°C
Supply Voltage / Voltaje:	5 V DC ± 5%
Weight / Peso:	100 gr

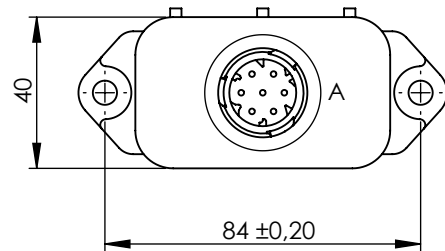
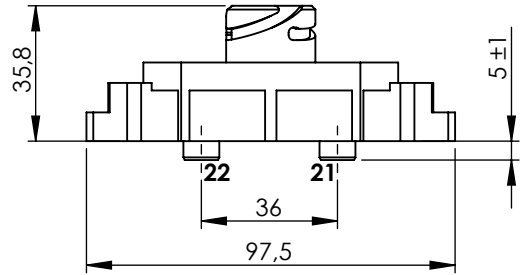


**Bayonet Connector/  
Conector Bayoneta  
DIN 72585**

DETAIL/DETALLE A  
SCALE/ESCALA 1 : 1

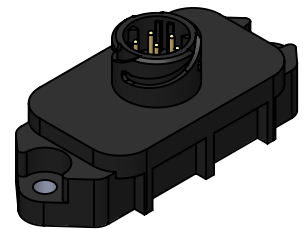


**Electrical scheme/  
Esquema eléctrico**



**PURPOSE/FINALIDAD:** Determine the existing pressure at the protection valve/  
Determinar la presión existente en la válvula protección de circuito.

CIRCUIT / CIRCUITO	21			22		
CONTACT / PIN	2	3	4	5	6	7
CONTACT ASSIGNMENTS / FUNCION	OUTPUT / SALIDA	+ 5 VDC	GND / MASA	OUTPUT / SALIDA	+ 5 VDC	GND / MASA



Modification	4				Drawn	
	3				27/04/20 E.L.	
2					Checked	
1					27/04/20 O.V.	
nº	Modified	Date	Reason	General Tolerance	Assembly	
Comments				ISO 2768 c-K	Part name	Pressure sensor/Sensor de presión
				Material	ID. Reference	2260584
					Scale: -	
					Review: 0	