

1

2

3

4

A

**Technical sheet / Datos técnicos:**

A

Part number adaptable to / Referencia adaptable a	K133754N50
Operating pressure / Presión de trabajo	max. 10 bar
Stroke / Carrera	50 ± 2 mm
Permissible medium / Medio de funcionamiento	Air / Aire
Operating temperature range / Rango de temperatura	-40 °C to / a +80 °C
Weight / Peso	400 gr

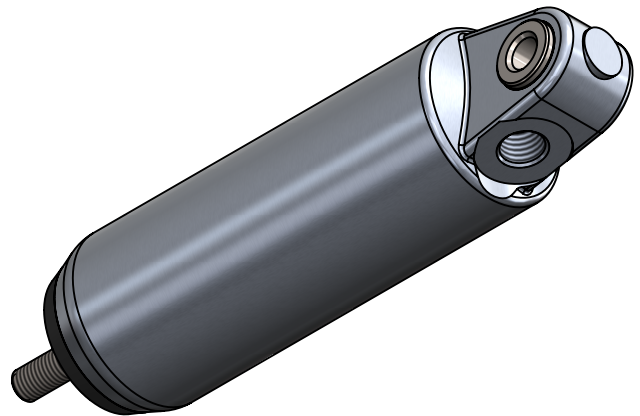
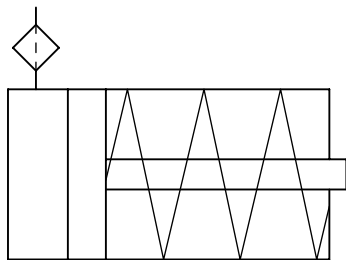
B

B

C

C

**Pneumatic scheme  
/  
Esquema neumático**



D

D

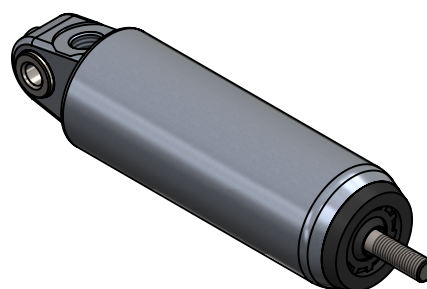
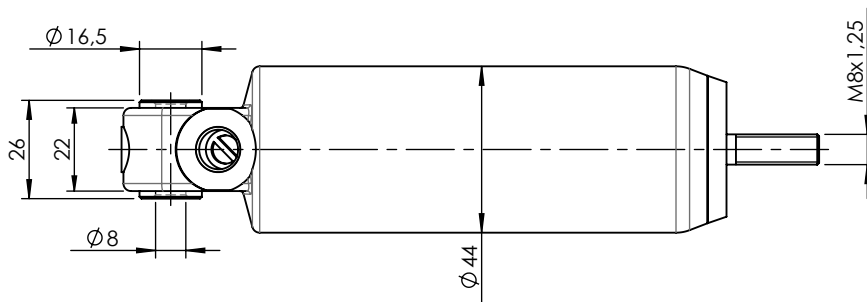
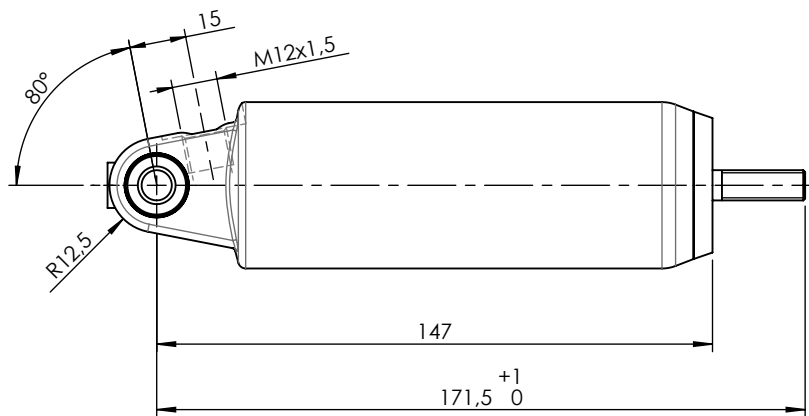
E


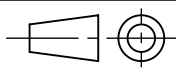
E

F

F

Modification	4				Drawn		
	3				04/08/20 J.S.		
	2				Checked		
	1				04/08/20 O.V.		
	nº	Modified	Date	Reason	General Tolerance		Assembly
Comments					-	Part name	Operating cylinder/Cilindro operacional
					Material	ID. Reference	2301403
					-	Scale: -	
					-	Review: 0	



F	Modification	4				Drawn		F
		3				04/08/20 J.S.		
		2				Checked		
		1				04/08/20 O.V.		
	nº	Modified	Date	Reason	General Tolerance	Assembly		
Comments					ISO 2768 c-K	Part name	Operating cylinder/Cilindro operacional	
					Material	ID. Reference	2301403	
					-	Scale: 1/2		Sheet 2/2
					-	Review: 0		