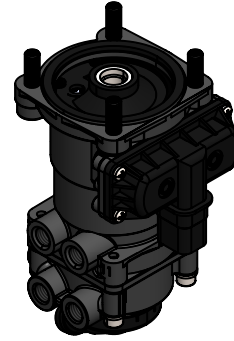
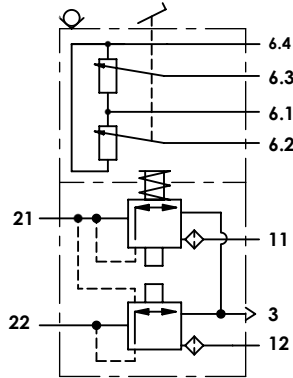


Technical sheet / Datos técnicos:

| | |
|--|--------------------|
| Part number adaptable to / Referencia adaptable a | 0486200004 |
| Operating pressure / Presión de trabajo | max. 10 bar |
| Voltage / Voltaje | 5 V |
| Predominance / Predominancia | ≤ 2,0 bar |
| Permissible medium / Medio de funcionamiento | Air / Aire |
| Operating temperature range / Rango de temperatura | -40°C to / a +80°C |
| Weight / Peso | 1200 gr |



| Port / Conexión | Function / Función | Thread / Rosca |
|-----------------|---|-----------------|
| 11 | Supply / Alimentación | 2x M12x1,5 |
| 12 | Supply / Alimentación | 2x M12x1,5 |
| 21 | Delivery / Salida | M12x1,5 |
| 22 | Delivery / Salida | M12x1,5 |
| 3 | Exhaust / Escape | Tube / Tubo 30° |
| 6 | Electrical connector / Conexión eléctrica | Conector 4 pin |

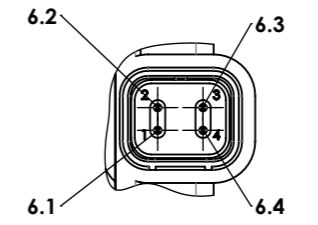
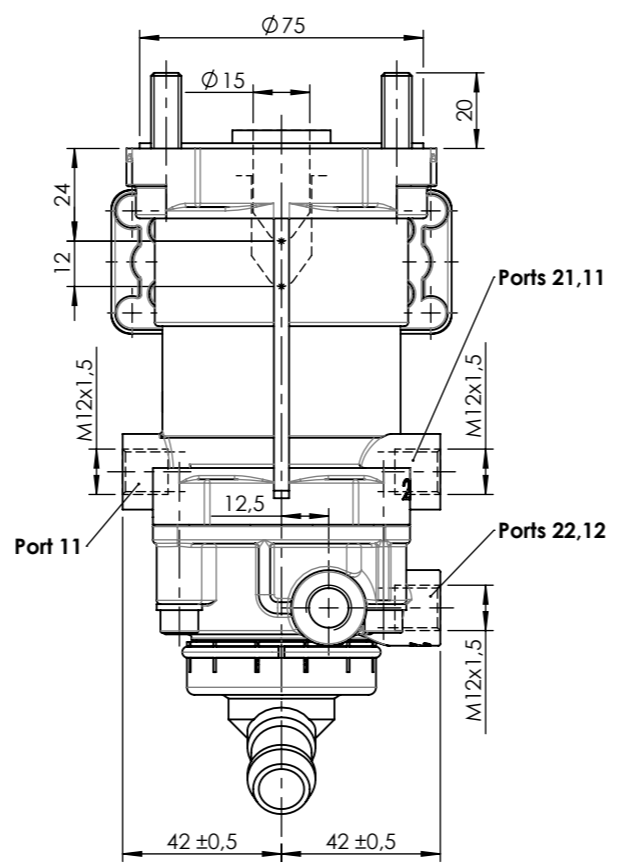
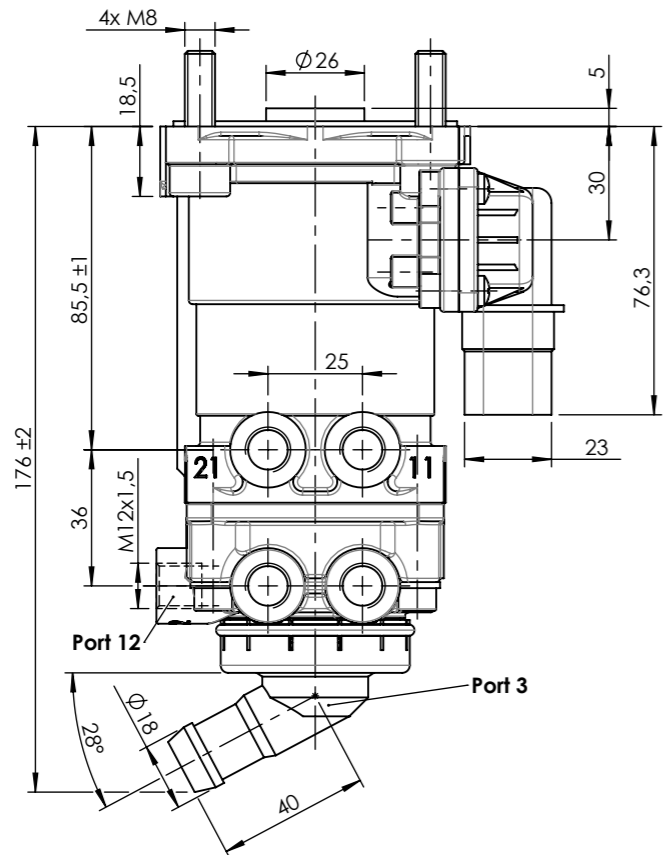
Purpose / Propósito:

Application of service brake system through the pedal actuation by the driver. This valve includes a displacement sensor which informs ECU braking about the position of the brake pedal. / Aplicación del freno de servicio mediante la actuación del pedal por parte del conductor. Esta válvula incluye un sensor de desplazamiento que informa a la ECU de frenos sobre la posición del pedal de freno.

Installation requirements / Requisitos para la instalación:

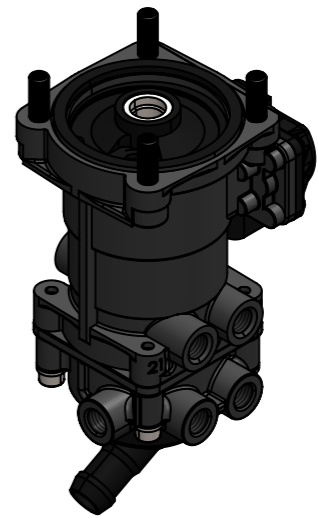
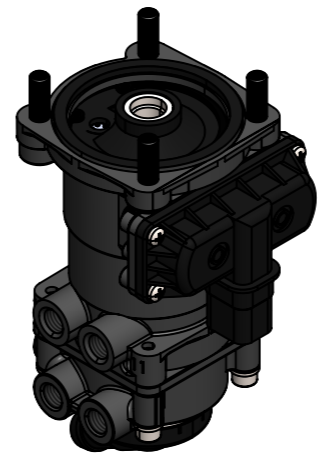
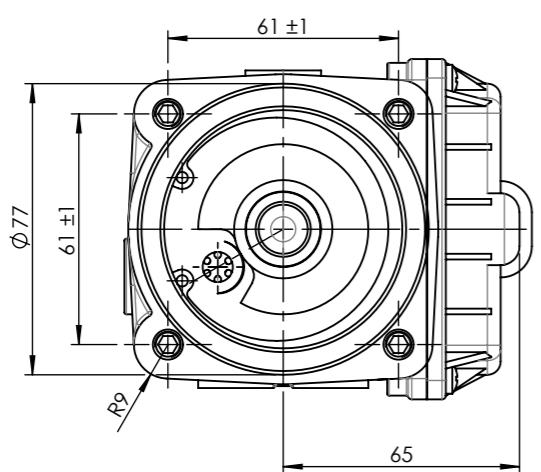
The design of the foot brake valve, acting on seat, must guarantee the maximum way of the push rod that is necessary to control the valve even in case of failure in the circuit I. Mounting is accomplished with four M8 mounting bolts. / El diseño de la válvula de freno de pie, accionándolo desde el asiento, debe garantizar el máximo recorrido de la varilla de empuje que resulta necesario para el accionamiento de la válvula, incluso en caso de que falle el circuito I. El montaje se efectúa con cuatro pernos de montaje M8.


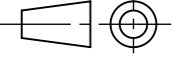
| | | | | | | | |
|--------------|----|----------|------|--------|-------------------|---------------|--------------------------|
| Modification | 4 | | | | Drawn | | |
| | 3 | | | | 19/12/15 J.S. | | |
| | 2 | | | | Checked | | |
| | 1 | | | | 19/12/15 O.V. | | |
| | nº | Modified | Date | Reason | General Tolerance | | Assembly |
| Comments | | | | | - | Part name | Brake signal transmitter |
| | | | | | Material | ID. Reference | 2332006 |
| | | | | | - | Scale: - | |
| | | | | | - | Review: 0 | |



| PIN | FUNCTION / FUNCIÓN |
|-----|--------------------|
| 6.1 | GND |
| 6.2 | Signal 1 |
| 6.3 | Signal 2 |
| 6.4 | Supply (+5V) |

SCALE / ESCALA 2 : 3



| | | | | | | |
|--------------|-------------|------|--------|-------------------|---|---|
| Modification | 4 | | | Drawn |  | |
| | 3 | | | 19/12/15 J.S. | | |
| | 2 | | | Checked | | |
| | 1 | | | 19/12/15 O.V. | | |
| | nº Modified | Date | Reason | General Tolerance | Assembly | - |
| Comments | | | | ISO 2768 c-K | Part name | Brake signal transmitter |
| | | | | Material | ID. Reference | 2332006 |
| | | | | - | Scale: 1/2 |  |
| | | | | | Review: 0 | |