

1

2

3

4

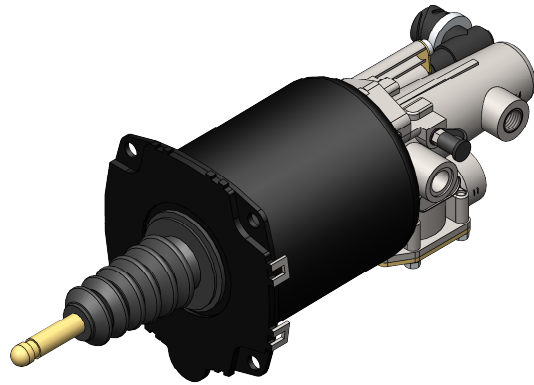
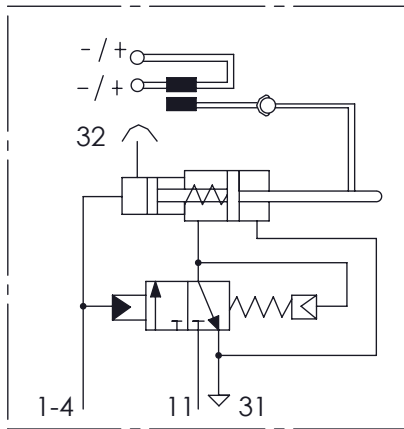
A

**Technical Data/ Datos Técnicos:**

Part number adaptable to/ Referencia adaptable a:	970 051 412 0
Hydraulic fluid/ Fluido hidráulico:	Mineral oil
Thermal range/ Rango de temperatura:	-40 °C to/ a 100 °C
Supply pressure/ Presión de alimentación:	max. 10 bar
Stroke/ Carrera:	85 mm
Weight/ Peso:	3 kg

B

B

**Pneumatic Scheme/ Esquema Neumático**

C

C

D

D

Port / Conexión	Function / Función	Thread / Rosca
11	Air Inlet / Entrada de aire	M22x1,5 Voss
1-4	Hydraulic Inlet / Entrada hidráulica	M14x1,5
31	Air Exhaust / Escape	-
32	Bleed Screw / Tornillo de Purga	-

E

E

**Purpose/ Finalidad:**

To reduce the clutch pedal effort and provide a smooth and precise clutch operation./  
Reducir la fuerza del pedal del embrague y conseguir un funcionamiento suave y preciso del mismo.

F

F

Modification	4				Drawn			
	3				16/01/15 S.L.			
	2				Checked			
	1				16/01/15 A.L.			
Comments	nº	Modified	Date	Reason	General Tolerance	Assembly	-	
						Part name	Clutch Servo/ Servoembrague	
						Material	ID. Reference	2250249
						Scale: -		Sheet 1/2
					Review: 0			

1 2 3 4 5 6 7 8

A

B

C

D

E

F

A

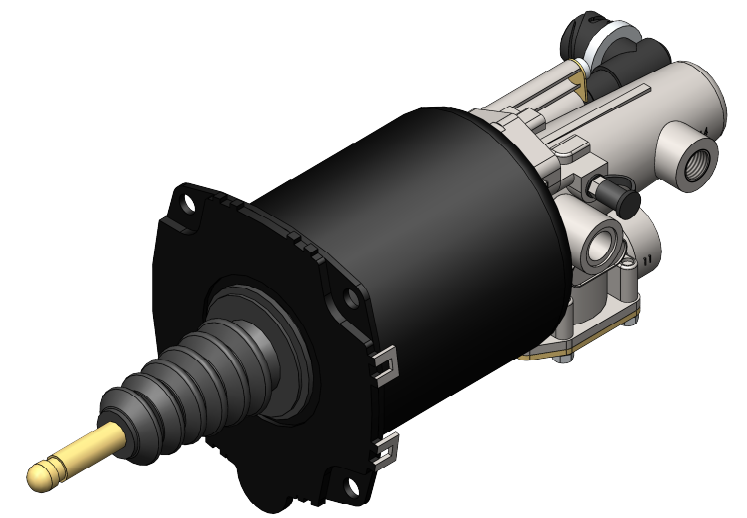
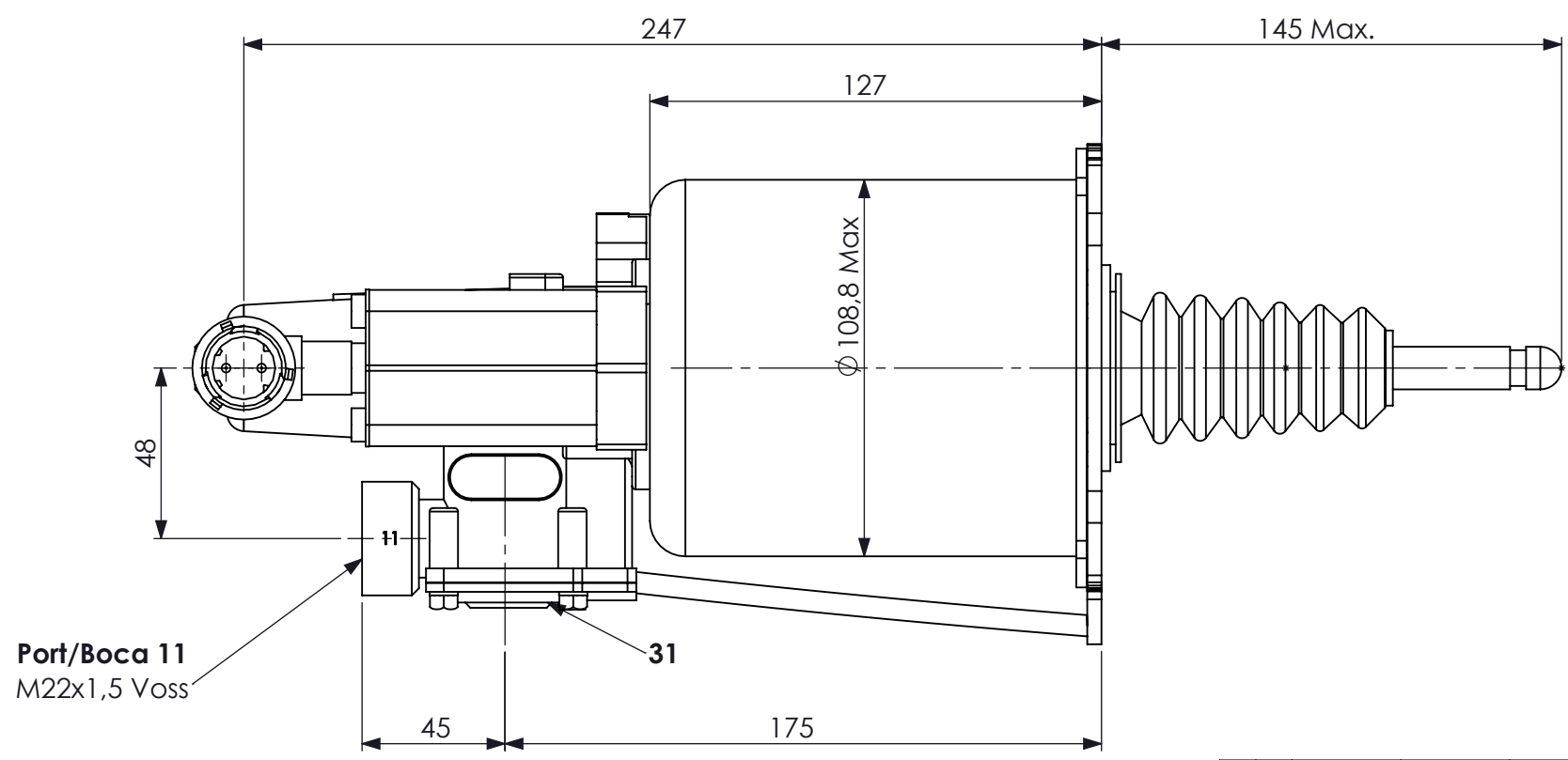
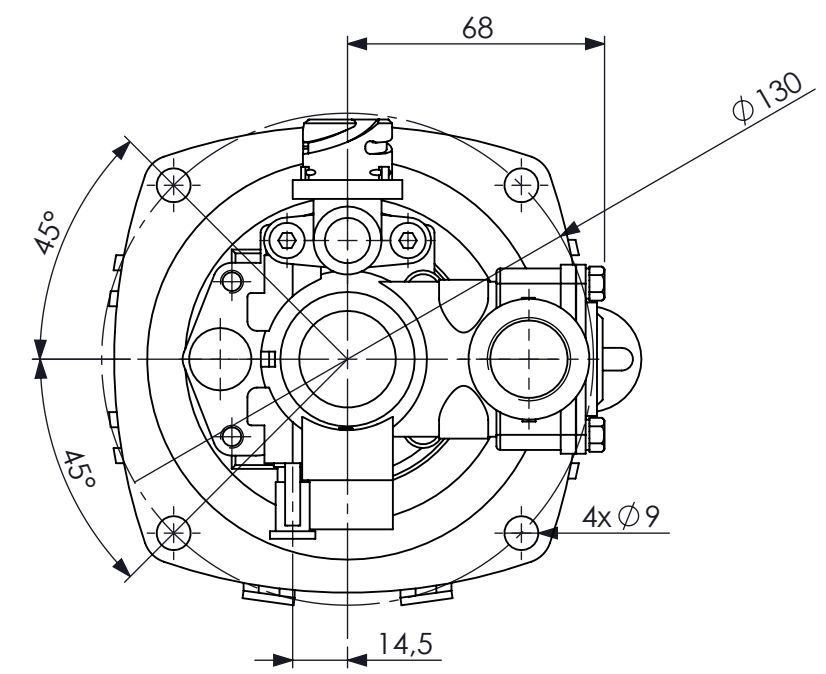
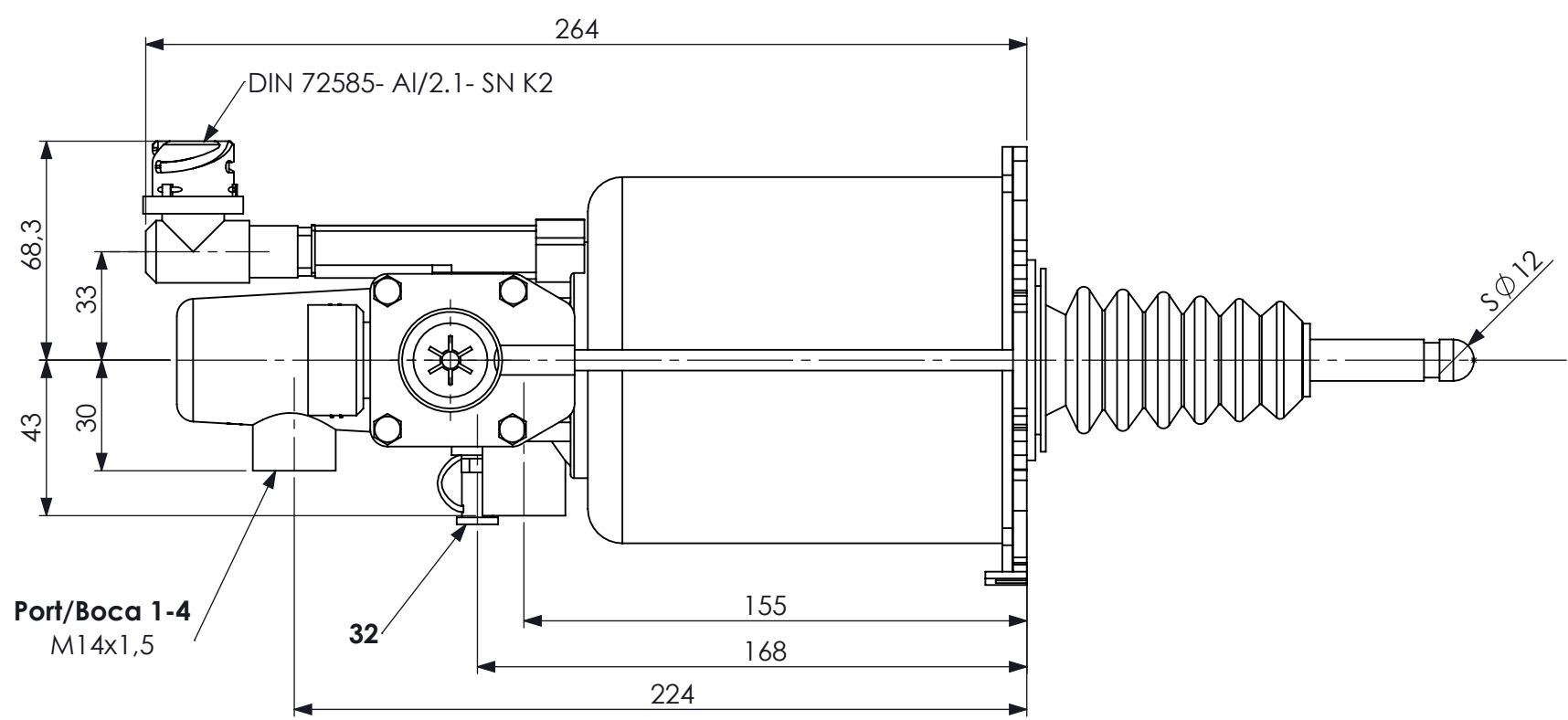
B


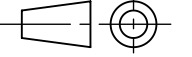
C

D

E

F



Modification	4				Drawn		F
	3				16/01/15 S.L.		
	2				Checked		
	1				16/01/15 A.L.		
	nº	Modified	Date	Reason	General Tolerance	Assembly	-
Comments					ISO 2768 c-K	Part name	Clutch Servo/ Servoembrague
					Material	ID. Reference	2250249
						Scale: 1/2	
						Review: 0	

1 2 3 4 5 6 7 8