

1

2

3

4

A

Technical Sheet / Datos Técnicos:

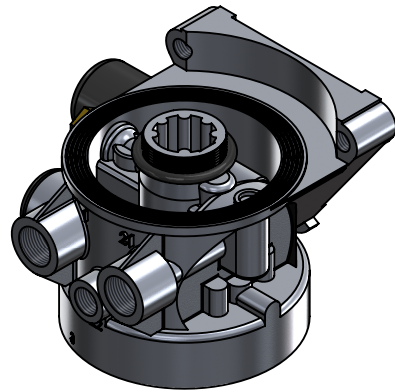
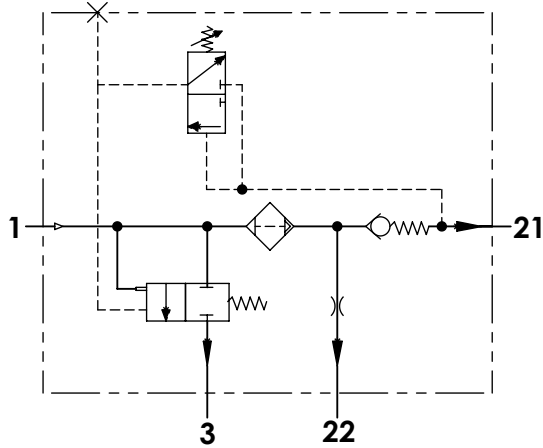
A

| | |
|--|------------------------|
| Part number adaptable to / Referencia adaptable a | LA 8205 |
| Safety valve pressure / Presión válvula de seguridad | 14.5 bar |
| Unloader / Regulador de presión | Integrated / Integrado |
| Cut-out pressure / Presión de corte | 12.0 ± 0.3 bar |
| Heating / Calentador | - |
| Permissible medium / Medio de funcionamiento | Air / Aire |
| Operating temperature range / Rango de temperatura | - 40°C a / to +80°C |
| Weight / Peso | 1700 gr |

B

B

4/23



C

C

D

D

| Port / Conexión | Function / Función | Thread / Rosca |
|-----------------|--|-------------------|
| 1 | From the compressor / Proveniente del compresor | M22x1.5 |
| 21 | To the reservoirs / A los calderines | M22x1.5 VOSS |
| 22 | To the regenerated air reservoir / Al calderín de regeneración | M16x1.5 VOSS |
| 4/23 | Control port / Puerto de control | Closed / Taponada |
| 3 | Exhaust for compressed air / Escape de aire comprimido | - |
| 6 | Heating / Calentador | - |

E

E

Purpose / Finalidad: Drying of the compressed air supplied by the compressor. /
Secado del aire comprimido procedente del compresor.

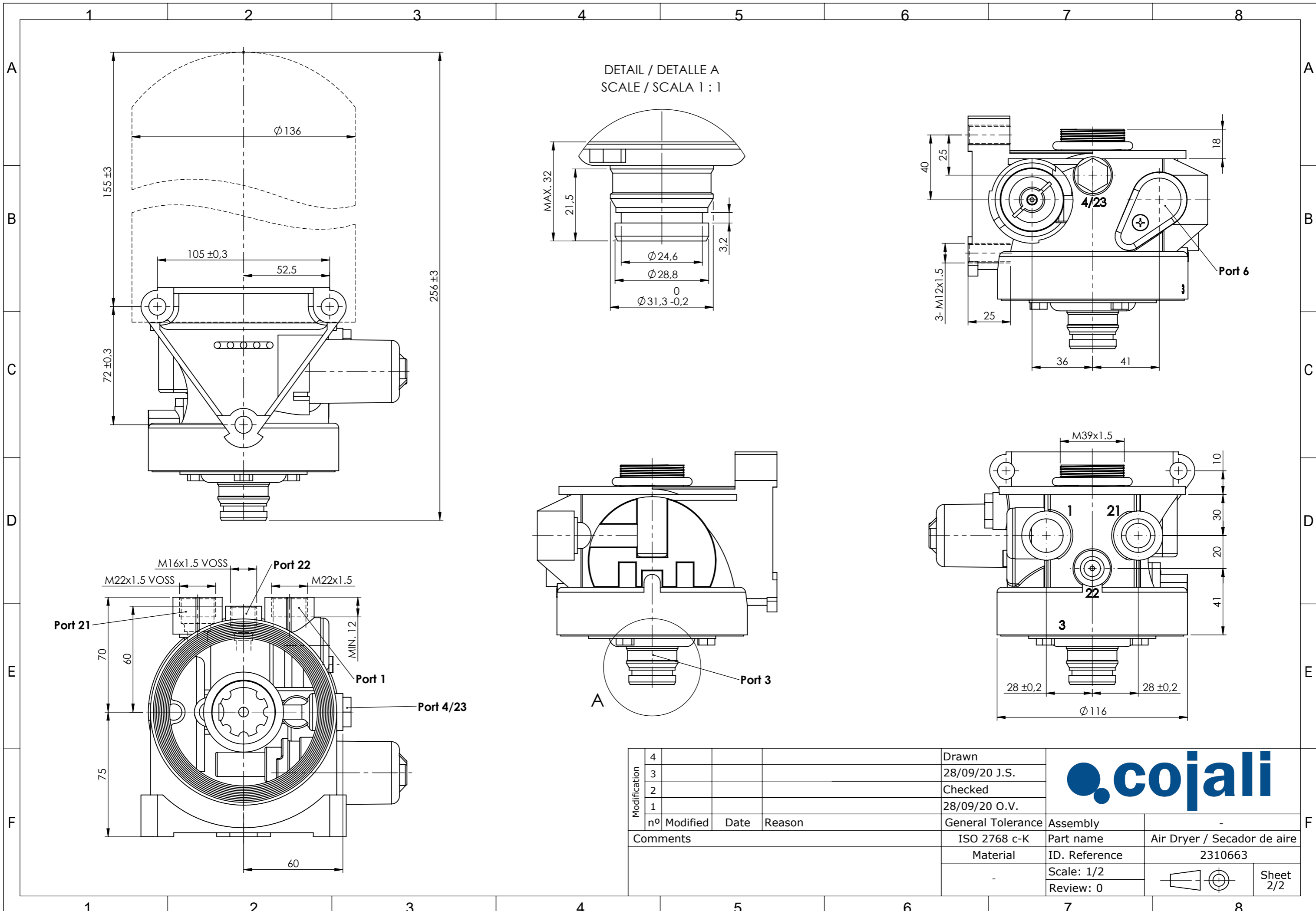
Installation / Instalación: Exhaust (3) must look down. /
El escape de aire (3) debe estar orientado hacia abajo.


E

F

F

| | | | | | | | | |
|--------------|----|----------|------|--------|-------------------|---------------|-----------------------------|--------------|
| Modification | 4 | | | | Drawn | | | |
| | 3 | | | | 28/09/20 J.S. | | | |
| | 2 | | | | Checked | | | |
| | 1 | | | | 28/09/20 O.V. | | | |
| | nº | Modified | Date | Reason | General Tolerance | | Assembly | |
| Comments | | | | | - | Part name | Air Dryer / Secador de aire | |
| | | | | | Material | ID. Reference | 2310663 | |
| | | | | | - | Scale: - | | Sheet 1/2 |
| | | | | | - | Review: 0 | | |



| | | | | | |
|--------------|-------------|------|--------|-------------------|---|
| Modification | 4 | | | Drawn |  |
| | 3 | | | 28/09/20 J.S. | |
| | 2 | | | Checked | |
| | 1 | | | 28/09/20 O.V. | |
| | nº Modified | Date | Reason | General Tolerance | Assembly |
| Comments | | | | ISO 2768 c-K | Part name |
| | | | | Material | ID. Reference |
| | | | | | Scale: 1/2 |
| | | | | | Review: 0 |
| | | | | | Air Dryer / Secador de aire |
| | | | | | 2310663 |
| | | | | | Sheet 2/2 |