

1

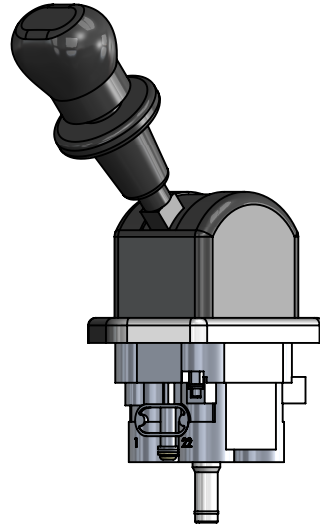
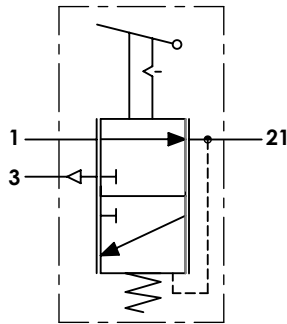
2

3

4

A Technical sheet / Datos técnicos:

Part number adaptable to / Referencia adaptable a	DPM61A
Operating pressure / Presión de trabajo	max. 8 bar
Actuation angle / Ángulo de accionamiento	73°
Permissible medium / Medio de funcionamiento	Air / Aire
Operating temperature range / Rango de temperatura	-40°C to / a +80°C
Weight / Peso	760 gr



Port / Conexión	Function / Función	Thread / Rosca
1	Supply / Alimentación	M16x1.5
21	Delivery / Salida	M16x1.5
3	Exhaust / Escape	-

Purpose / Propósito: Parking braking actuation due to pressure release of spring brakes actuators. / Accionamiento del freno de estacionamiento gracias al alivio de la presión en las cámaras de muelle de los actuadores de freno.

Installation requirements / Requisitos para la instalación: The valve is fastened using two screws M6. / La válvula es fijada usando dos tornillos M6.

F	Modification	4				Drawn	
		3				09/09/15 A.U.	
		2				Checked	
		1				09/09/15 A.L.	
		nº	Modified	Date	Reason	General Tolerance	
Comments					-	Part name	Hand brake valve
					Material	ID. Reference	2324203
					-	Scale: -	
					-	Review: 0	

1

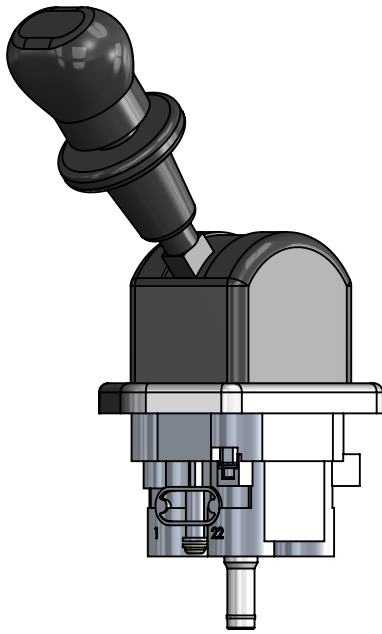
2

3

4

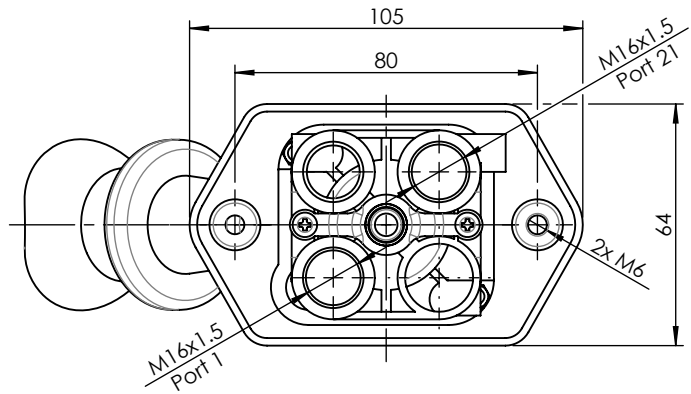
A

A



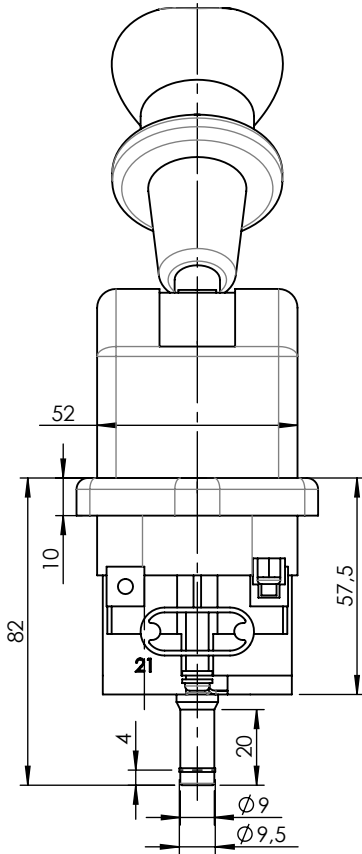
B

B



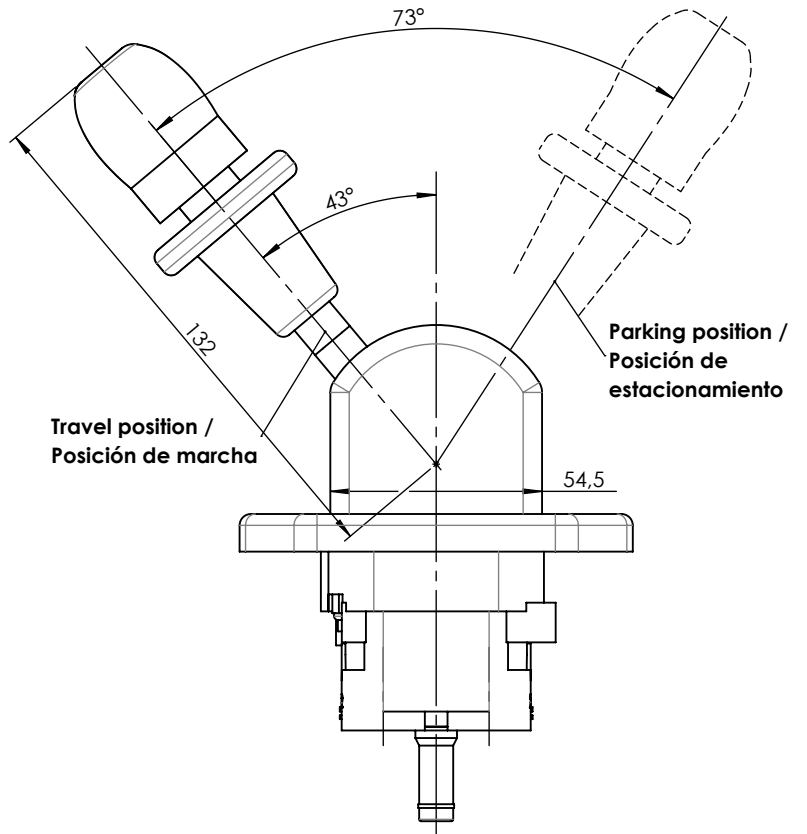
C

C



D

D



E

E

F	Modification	4				Drawn		F
		3				09/09/15 A.U.		
		2				Checked		
		1				09/09/15 A.L.		
		nº	Modified	Date	Reason	General Tolerance		
Comments					ISO 2768 c-K	Part name	Hand brake valve	
					Material	ID. Reference	2324203	
					-	Scale: 1/2		Sheet 2/2
					-	Review: 0		