

1

2

3

4

A

**Technical Data/ Datos Técnicos:**

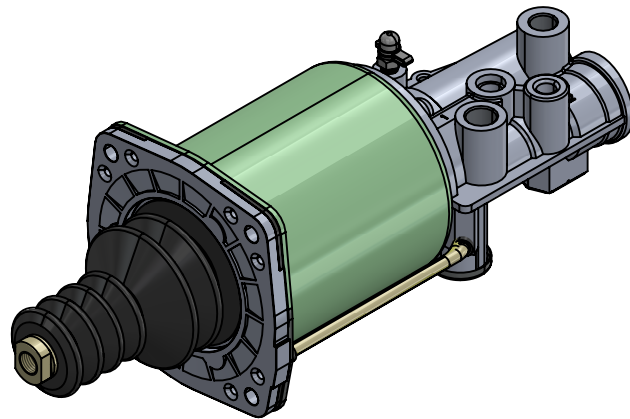
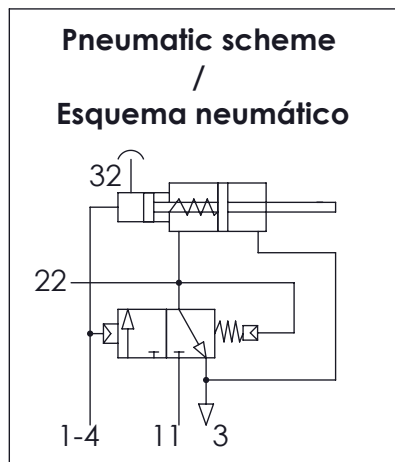
Part number adaptable to/ Referencia adaptable a:	VG3289
Hydraulic fluid/ Fluido hidráulico:	Brake fluid SAE J 1703
Thermal range/ Rango de temperatura:	-40 °C to/ a 100 °C
Supply pressure/ Presión de alimentación:	max. 11,5 bar
Stroke/ Carrera:	80 mm
Weight/ Peso:	3,140 kg

B

B

C

C



D

D

Port / Conexión	Function / Función	Thread / Rosca
11	Air Inlet / Entrada de aire	M16x1,5
1-4	Hydraulic Inlet / Entrada hidráulica	M14x1,5
22	Delivery / Salida aire	M12x1,5
3	Air Exhaust / Escape	-
32	Bleed Screw / Tornillo de Purga	-

E

E

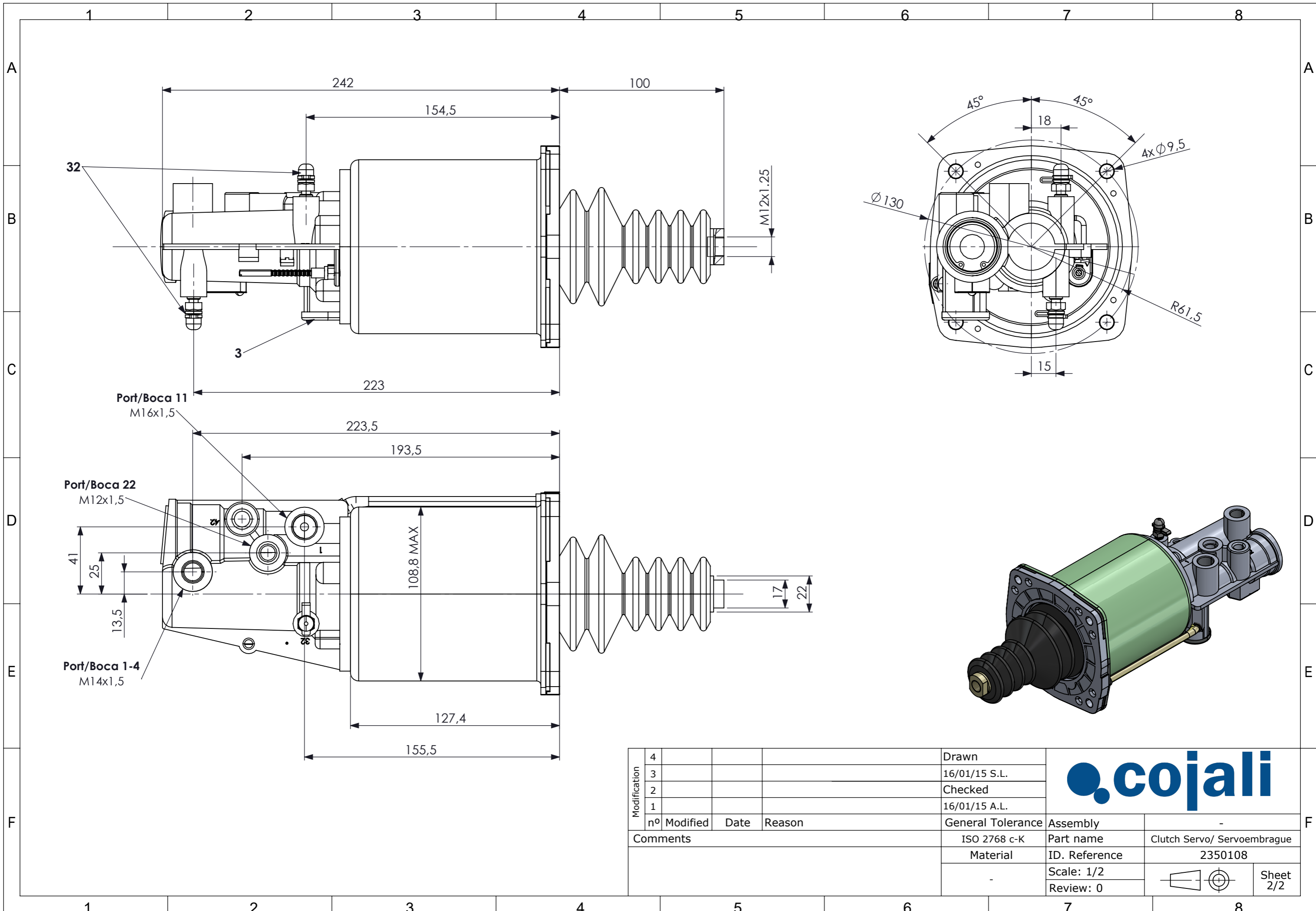
**Purpose/ Finalidad:**



To reduce the clutch pedal effort and provide a smooth and precise clutch operation./ Reducir la fuerza del pedal del embrague y conseguir un funcionamiento suave y preciso del mismo.

F

F

Modification	4				Drawn			
	3				16/01/15 S.L.			
	2				Checked			
	1				16/01/15 A.L.			
Comments	nº	Modified	Date	Reason	General Tolerance	Assembly	-	
						Part name	Clutch Servo/ Servoembrague	
						Material	ID. Reference	2350108
						Scale: -		Sheet 1/2
					Review: 0			



Modification	4			Drawn		
	3			16/01/15 S.L.		
	2			Checked		
	1			16/01/15 A.L.		
	nº Modified	Date	Reason	General Tolerance	Assembly	
Comments				ISO 2768 c-K	Part name	-
				Material	ID. Reference	Clutch Servo/ Servoembrague
				-	Scale: 1/2	2350108
					Review: 0	
						Sheet 2/2