

1

2

3

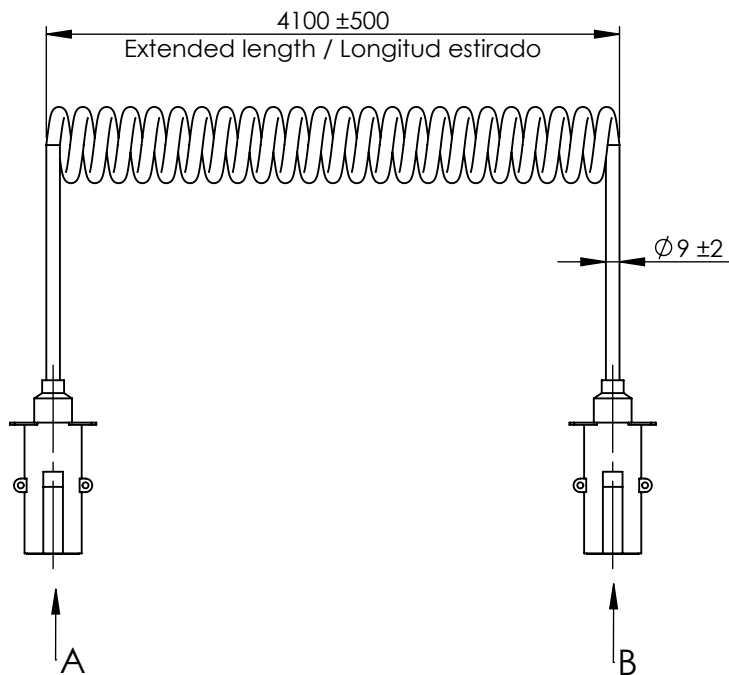
4

A

Technical data/ Datos técnicos:

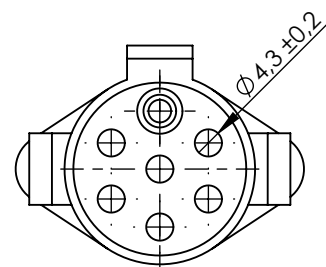
| | |
|--|-----------------|
| Part number adaptable to / Referencia adaptable a | 4413000030 |
| Operating temperature range / Rango de temperatura | -40°C a/to 80°C |
| Weight / Peso | 1040 gr |

B



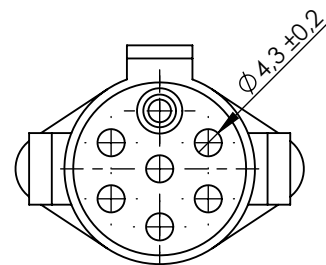
B

C

VIEW / VISTA A
7 PIN ISO (1)

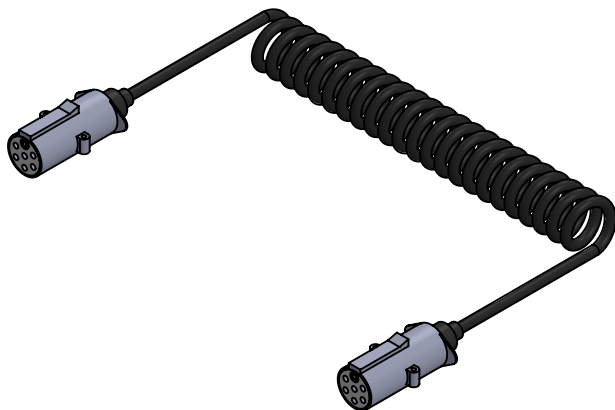
C

D

VIEW / VISTA B
7 PIN ISO (2)

D

E



E

F

| | | | | | | |
|--------------|----|----------|----------|--------------------------------------|-------------------|--|
| Modification | 4 | | | | Drawn | |
| | 3 | | | | 25/08/20 S.F. | |
| | 2 | | | | Checked | |
| | 1 | S.F. | 03/08/23 | Add table of continuity between pins | 25/08/20 E.L. | |
| | nº | Modified | Date | Reason | General Tolerance | |
| Comments | | | | ISO 2768 c-K | Part name | Serpentine 7Terminal 24V Type-S ISO3731/ Serpentina 7Pin 24V Tipo-S ISO3731 |
| | | | | Material | ID. Reference | 2260105 |
| | | | | - | Scale: 1/5 | |
| | | | | - | Review: 1 | |

F

1

2

3

4

A

A

Continuity between pins / Continuidad entre pines

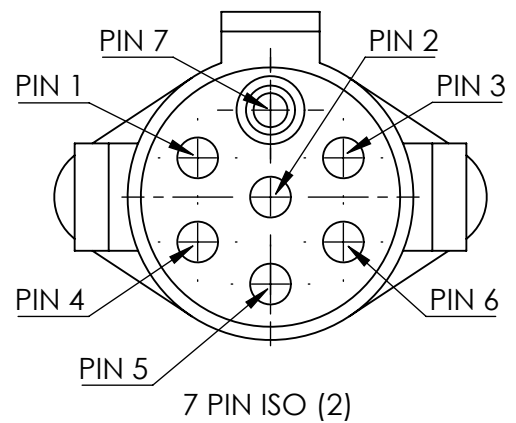
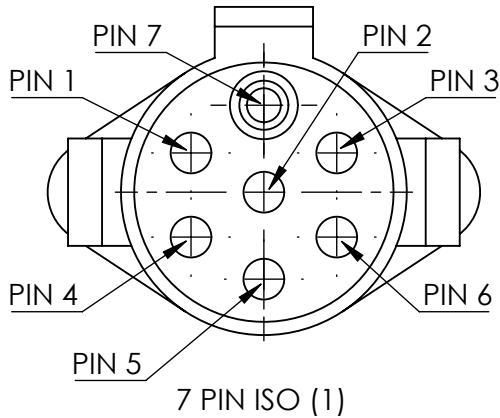
| | |
|---|---|
| 1 | 1 |
| 2 | 2 |
| 3 | 3 |
| 4 | 4 |
| 5 | 5 |
| 6 | 6 |
| 7 | 7 |

B

B

C

C



D

D

E

E

F

F

Modification

4

Drawn

3

25/08/20 S.F.

2

Checked

1

S.F.

03/08/23

Add table of continuity between pins

25/08/20 E.L.

nº

Modified

Date

Reason

General Tolerance

Assembly

Comments

ISO 2768 c-K

Part name

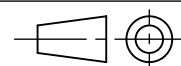
Serpentine 7Terminal 24V Type-S ISO3731/
Serpentina 7Pin 24V Tipo-S ISO3731

Material

ID. Reference

2260105

Scale: 1/5

Sheet
2/2

Review: 1