

1

2

3

4

A

**Technical sheet / Datos técnicos:**

A

Part number adaptable to / Referencia adaptable a	3550700475
Stroke / Carrera	30 ± 2 mm
Weight / Peso	250 gr

B

B

C

C

D

D


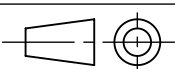
E

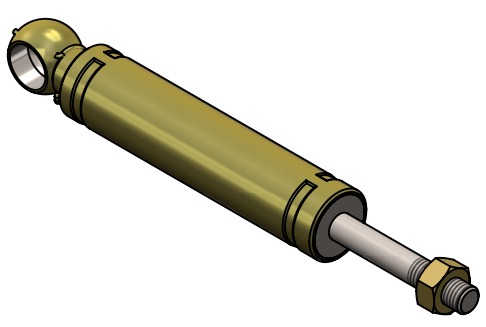
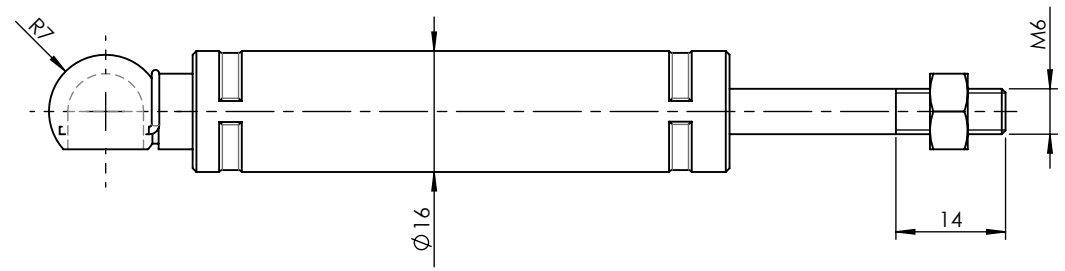
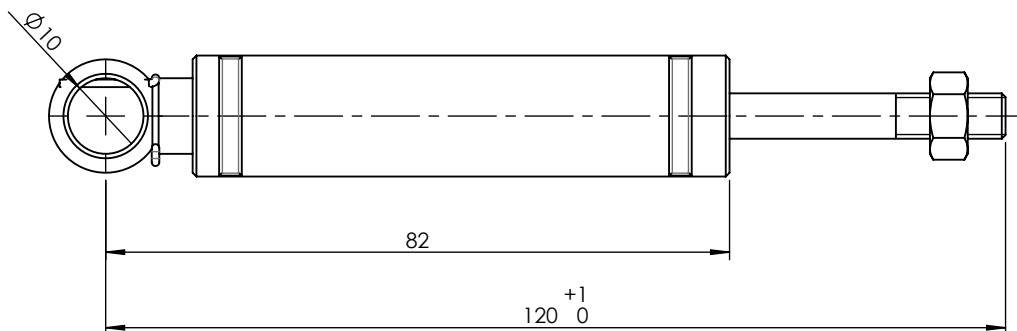
E



F

F

Modification	4				Drawn	
	3				04/08/20 J.S.	
	2				Checked	
	1				04/08/20 O.V.	
nº	Modified	Date	Reason	General Tolerance	Assembly	-
Comments				-	Part name	Operating cylinder/Cilindro operacional
				Material	ID. Reference	2880116
				-	Scale: -	
				-	Review: 0	



F	Modification	4				Drawn	
		3				04/08/20 J.S.	
		2				Checked	
		1				04/08/20 O.V.	
	nº	Modified	Date	Reason	General Tolerance	Assembly	
Comments					ISO 2768 c-K	Part name	Operating cylinder/Cilindro operacional
					Material	ID. Reference	2880116
					-	Scale: 1/1	
					-	Review: 0	