

1

2

3

4

A

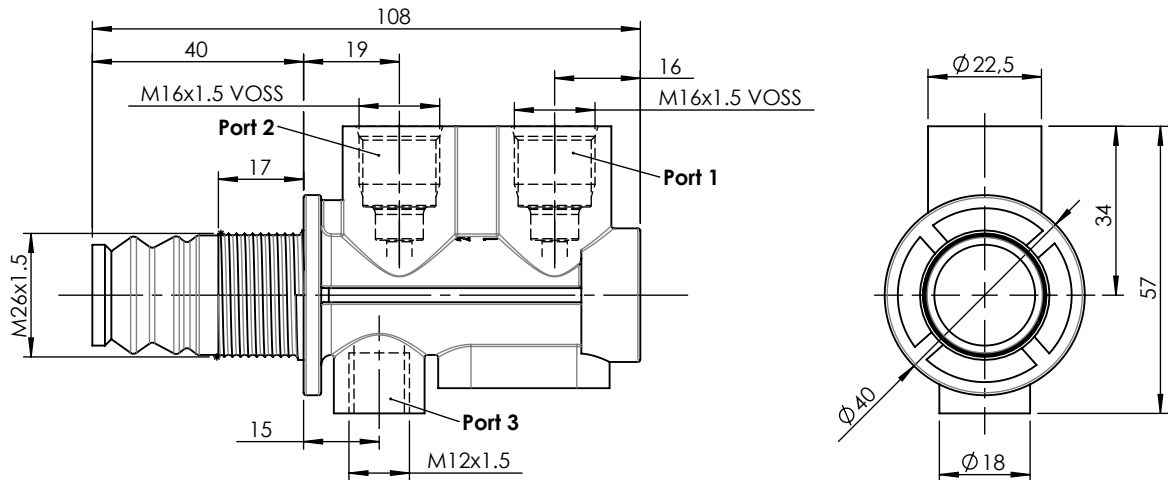
Technical sheet / Datos técnicos:

A

| | |
|--|--------------------|
| Part number adaptable to / Referencia adaptable a | 4630132000 |
| Working pressure / Presión de trabajo | max 10 bar |
| Stroke / Carrera | 2,5 mm |
| Permissible medium / Medio de funcionamiento | Air / Aire |
| Operating temperature range / Rango de temperatura | -40°C to / a +80°C |
| Weight / Peso | 300 gr |

B

B

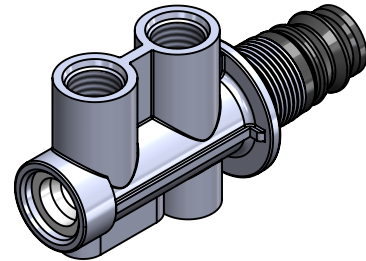


C

C

D

D



| Port / Conexión | Function / Función | Thread / Rosca |
|-----------------|-----------------------|----------------|
| 1 | Supply / Alimentación | M16x1.5 VOSS |
| 2 | Delivery / Salida | M16x1.5 VOSS |
| 3 | Exhaust / Escape | M12x1.5 |

E

Purpose / Propósito: To ventilate and to purge operating cylinders. / Ventilar y purgar los cilindros operativos.

Installation requirements / Requisitos para la instalación: The valve must be installed using the thread M26x1.5. / La válvula debe ser instalada usando la rosca M26x1.5.

F

F

| | | | | | | | | |
|--------------|----|----------|------|--------|-------------------|---------------|--------------|-----------|
| Modification | 4 | | | | Drawn | | | |
| | 3 | | | | 29/12/14 A.U. | | | |
| | 2 | | | | Checked | | | |
| | 1 | | | | 29/12/14 A.L. | | | |
| | nº | Modified | Date | Reason | General Tolerance | | Assembly | |
| Comments | | | | | ISO 2768 c-K | Part name | 3 ways valve | |
| | | | | | Material | ID. Reference | 2213107 | |
| | | | | | | Scale: 2/3 | | Sheet 1/1 |
| | | | | | | Review: 0 | | |