

1

2

3

4

A

A

Technical sheet / Datos técnicos:

| | |
|--|--------------------|
| Part number adaptable to / Referencia adaptable a | 0004308126 |
| Operating pressure / Presión de trabajo | max. 10 bar |
| Stroke / Carrera | 50 ± 2 mm |
| Permissible medium / Medio de funcionamiento | Air / Aire |
| Operating temperature range / Rango de temperatura | -40°C to / a +80°C |
| Weight / Peso | 300 gr |

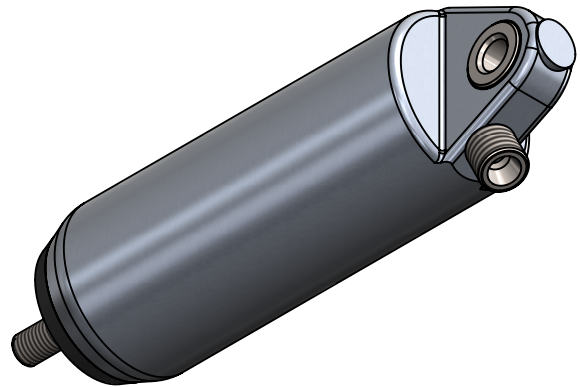
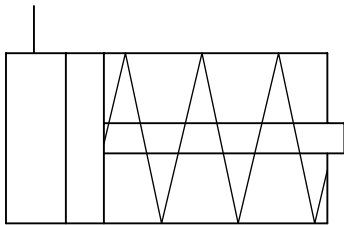
B

B

C

C

**Pneumatic scheme
/
Esquema neumático**



D

D

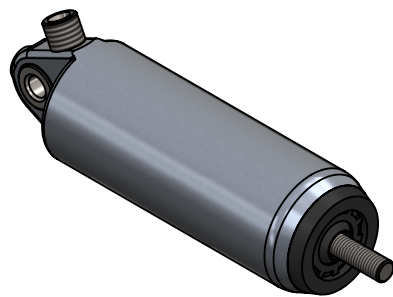
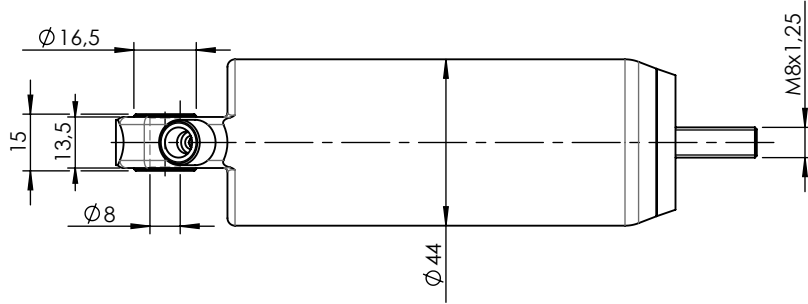
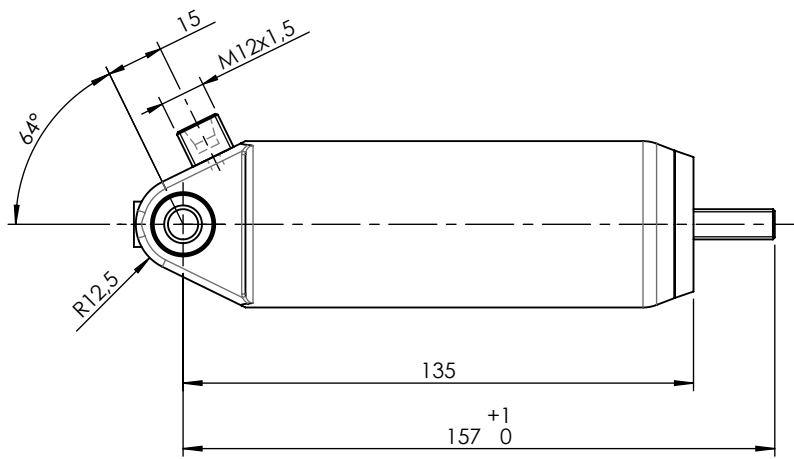
E


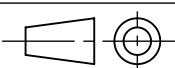
E

F

F

| | | | | | | | |
|--------------|----|----------|------|--------|-------------------|---------------|---|
| Modification | 4 | | | | Drawn | | |
| | 3 | | | | 04/08/20 J.S. | | |
| | 2 | | | | Checked | | |
| | 1 | | | | 04/08/20 O.V. | | |
| | nº | Modified | Date | Reason | General Tolerance | | Assembly |
| Comments | | | | | - | Part name | Operating cylinder/Cilindro operacional |
| | | | | | Material | ID. Reference | 2801001 |
| | | | | | - | Scale: - | |
| | | | | | - | Review: 0 | |



| | | | | | | | |
|----------|--------------|------|--------|-------------------|---------------|---|---|
| F | Modification | | | | | Drawn |  |
| | 4 | | | | | 04/08/20 J.S. | |
| | 3 | | | | | Checked | |
| | 2 | | | | | 04/08/20 O.V. | |
| | 1 | | | | | | |
| nº | Modified | Date | Reason | General Tolerance | Assembly | - | |
| Comments | | | | ISO 2768 c-K | Part name | Operating cylinder/Cilindro operacional | |
| | | | | Material | ID. Reference | 2801001 | |
| | | | | - | Scale: 1/2 |  | Sheet 2/2 |
| | | | | - | Review: 0 | | |