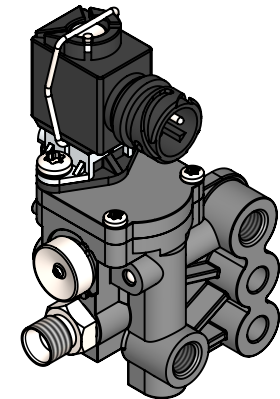
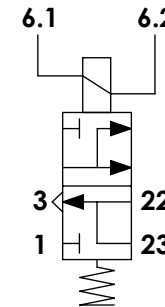


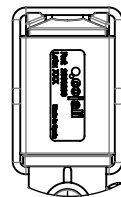
### Technical data / Datos técnicos:

Part number adaptable to / Referencia adaptable a	5410500370
Operating pressure / Presión de trabajo	max. 10 bar
Voltage / Voltaje	24 V
Current consumption / Consumo de corriente	max. 0,1 A
Permissible medium / Medio de funcionamiento	Air / Aire
Operating temperature range / Rango de temperatura	-40°C to / a +80°C
Weight / Peso	398 g

### Pneumatic scheme / Esquema neumático:



'A'



### Identification label / Etiqueta de identificación:

*Cojali reference*

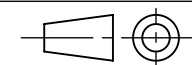
*Country of production*

*Batch number*



Scale 1 : 1

Modification	4				Drawn	
	3				28/01/20 S.S.	
	2				Checked	
	1				28/01/20 O.V.	
nº	Modified	Date	Reason	General Tolerance	Assembly	
Comments					ISO 2768 v-K	Part name
					Material	ID. Reference
					-	Scale: 1/2
						Review: 0



Sheet 1/1