

1

2

3

4

A

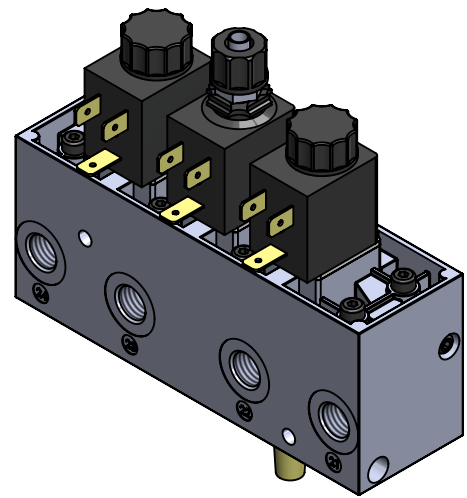
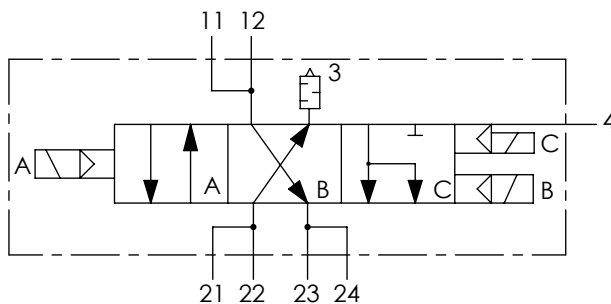
Technical sheet / Datos técnicos:

Part number adaptable to / Referencia adaptable a:	3720600220
Working pressure / Presión de trabajo:	max. 10 bar
Type of current / Tipo de corriente:	Direct current / Corriente continua
Voltage / Voltaje:	24 V
Nominal current / Corriente nominal:	0.115 A
Permissible medium / Medio de funcionamiento:	Air / Aire
Operating temperature range / Rango de temperatura:	-40 °C to / a +80 °C
Weight / Peso:	1350 gr

B

B

C



D

D

Port / Conexión	Function / Función	Thread / Rosca
11-12	Supply / Alimentación	M12x1.5
21-22-23-24	Delivery / Salida	M12x1.5
3	Exhaust / Escape	-
4	Control / Pilotaje	Ø8 mm

E

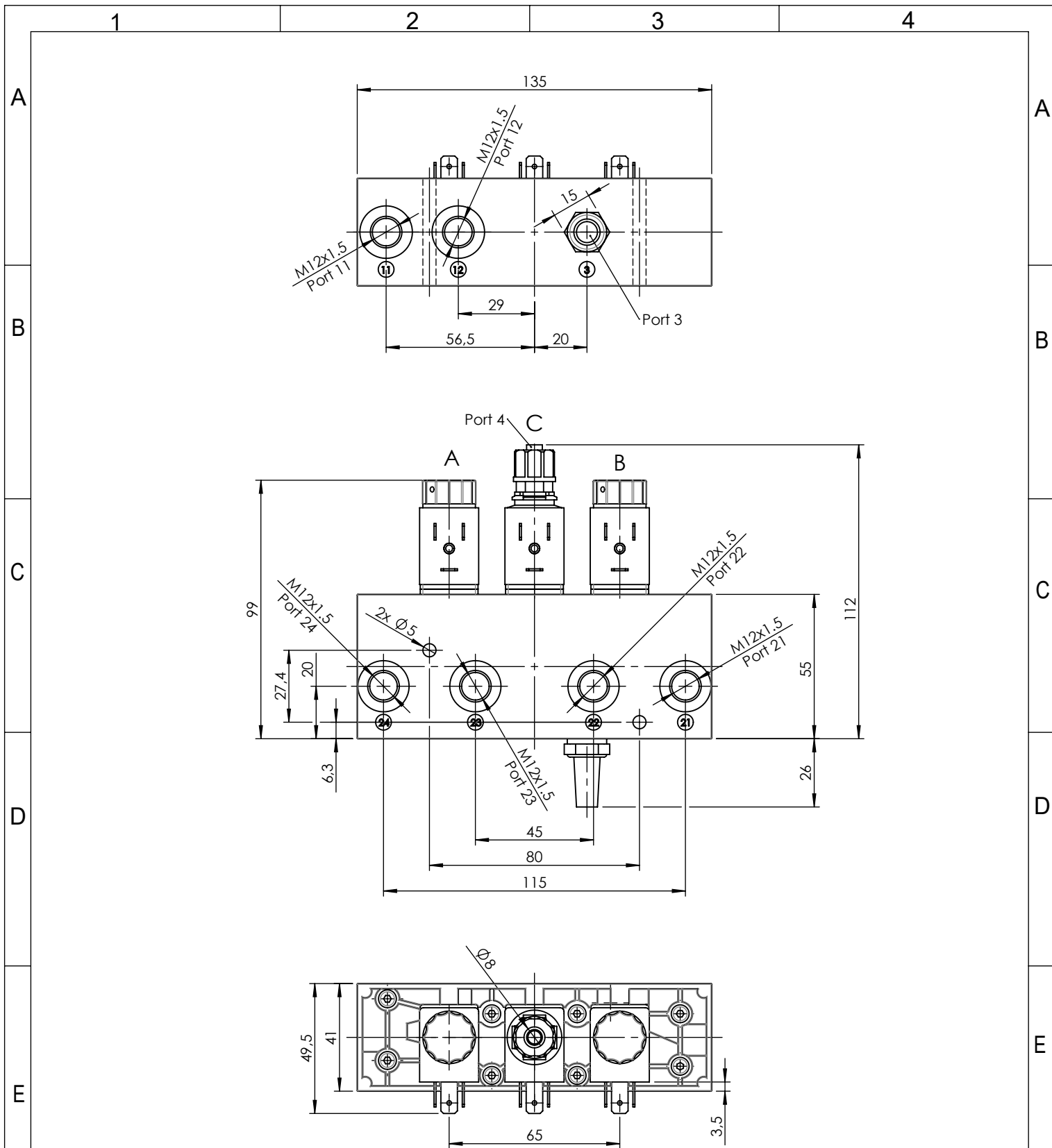
Purpose / Propósito: Allow air flows to delivery port when the solenoid is activated. / Permitir el paso de aire hacia la conexión de salida cuando se activa el solenoide.


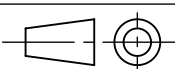
Installation requirements / Requisitos para la instalación: The valve must be installed using two screws M5. / La válvula debe ser instalada usando dos tornillos M5.

F

F

Modification	4				Drawn		
	3				18/06/20 S.F.		
	2				Checked		
	1				18/06/20 O.V.		
	nº	Modified	Date	Reason	General Tolerance		Assembly
Comments					-	Part name	Door control solenoid
					Material	ID. Reference	2218101
					-	Scale: -	
					-	Review: 0	



F	Modification	4				Drawn			
		3				18/06/20 S.F.			
		2				Checked			
		1				18/06/20 O.V.			
F	Comments	nº	Modified	Date	Reason	General Tolerance	Assembly	-	
							ISO 2768 c-K	Part name	Door control solenoid
							Material	ID. Reference	2218101
							-	Scale: 1/2	
						Review: 0			