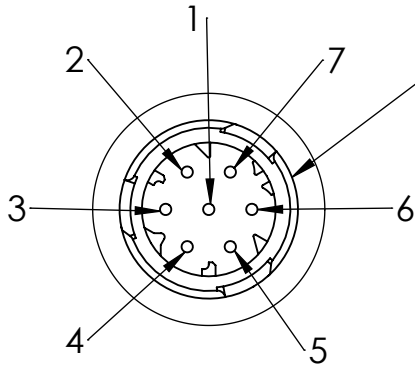
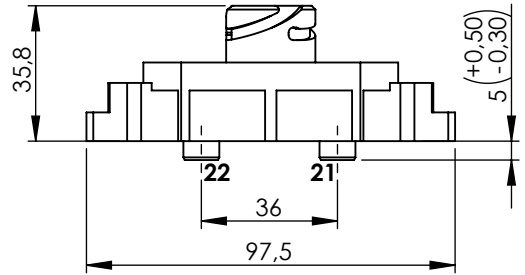


Technical Sheet / Datos técnicos:

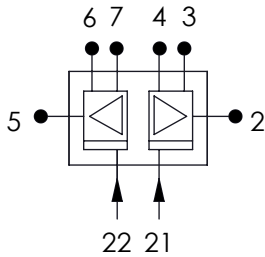
Part adaptable to / Referencia adaptable a:	932 500 501 1
Admissible overpressure / Presión máxima:	16 bar
Measuring range / Rango de medida:	0.85 - 12.85 bar
Operating temperature range / Rango de temperatura:	- 40°C a / to +80°C
Supply Voltage / Voltaje:	5 V DC ± 5%
Weight / Peso:	100 gr



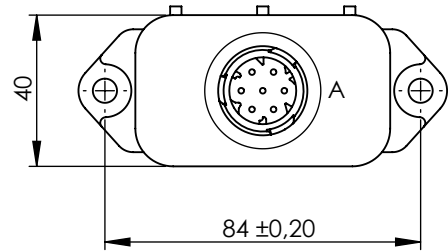
**Bayonet Connector/
Conector Bayoneta
DIN 72585**



DETAIL/DETALLE A
SCALE/ESCALA 1 : 1

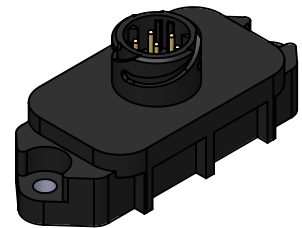


**Electrical scheme/
Esquema eléctrico**



PURPOSE/FINALIDAD: Determine the existing pressure at the outlets of the APU unit./
Determinar la presión existente en las salidas de la unidad APU.

CIRCUIT / CIRCUITO	21			22		
CONTACT / PIN	2	3	4	5	6	7
CONTACT ASSIGNMENTS / FUNCIÓN	OUTPUT / SALIDA	+ 5 VDC	0 V	OUTPUT / SALIDA	+ 5 VDC	0 V



Modification	4				Drawn	
	3				24/11/15 A.U.	
	2				Checked	
	1				24/11/15 A.L.	
	nº	Modified	Date	Reason	General Tolerance	
Comments				ISO 2768 c-K	Part name	Pressure sensor/Sensor de presión
				Material	ID. Reference	2260241
					Scale: -	
					Review: 0	