

1

2

3

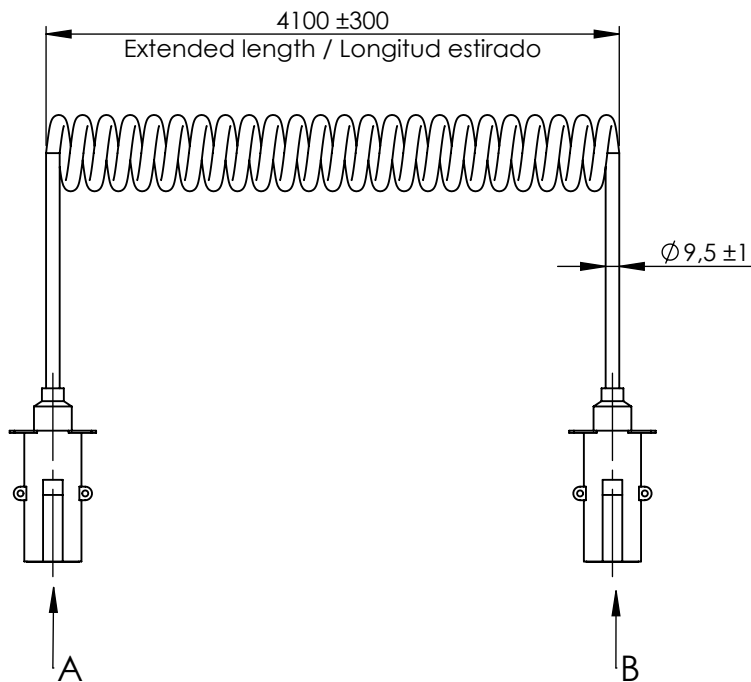
4

A

**Technical data/ Datos técnicos:**

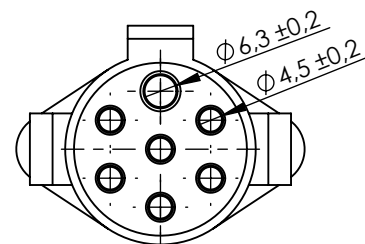
Part number adaptable to / Referencia adaptable a	220411002
Operating temperature range / Rango de temperatura	-40°C a/to 80°C
Weight / Peso	847 gr

B



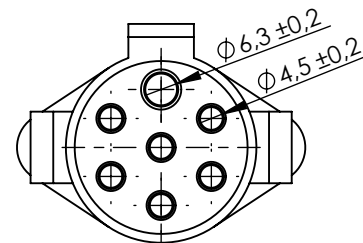
B

C

VIEW / VISTA A  
7 PIN ISO (1)

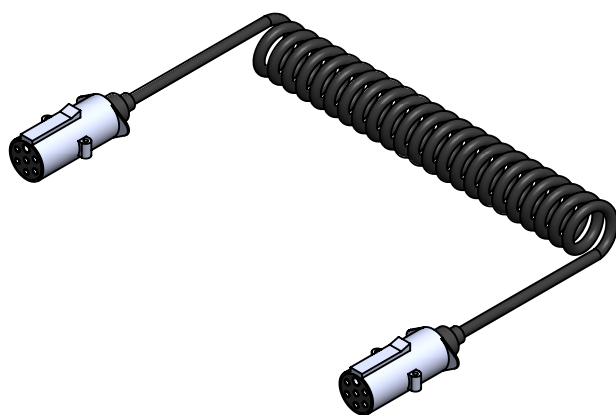
C

D

VIEW / VISTA B  
7 PIN ISO (2)

D

E



E

F

Modification	4				Drawn	
	3				25/08/20 S.F.	
	2				Checked	
	1	S.F.	03/08/23	Add table of continuity between pins	25/08/20 E.L.	
	nº	Modified	Date	Reason	General Tolerance	
Comments				ISO 2768 c-K	Part name	Serpentine 7Terminal 24V Type-N ISO1185/ Serpentina 7Pin 24V Tipo-N ISO1185
				Material	ID. Reference	2260104
					Scale: 1/5	
					Review: 1	

F

1

2

3

4

A

A

Continuity between pins / Continuidad entre pines

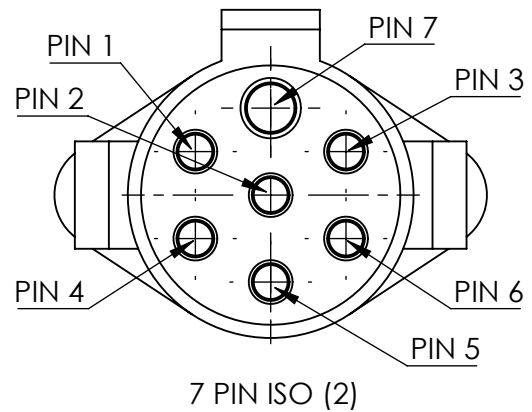
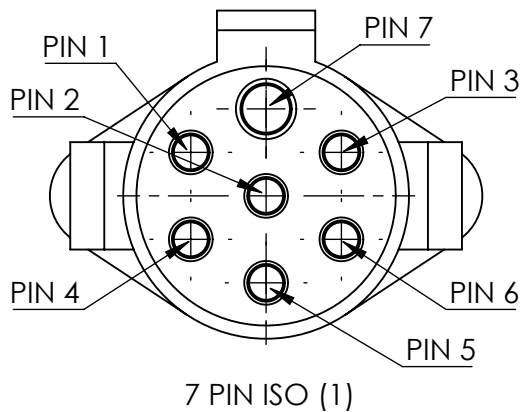
1	1
2	2
3	3
4	4
5	5
6	6
7	7

B

B

C

C



D

D

E

E

F

F

Modification

4  
3  
2  
1S.F.  
nº Modified03/08/23  
DateAdd table of continuity between pins  
Reason

General Tolerance

Drawn

25/08/20 S.F.

Checked

25/08/20 E.L.

Comments

ISO 2768 c-K

Assembly

Serpentine 7Terminal 24V Type-N ISO1185/  
Serpentina 7Pin 24V Tipo-N ISO1185

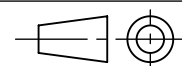
Material

ID. Reference

2260104

Scale: 1/5

Review: 1

Sheet  
2/2